

中正锅炉 业界领先

ZOZEN Boiler, An Industrial Leading Boiler Brand

致力于

为全球客户提供**满意的**个性化锅炉**产品及服务**
持续为客户创造**更大价值**

ZOZEN Boiler is **committed to** providing tailored boiler **products and services** for customers all over the world.

Continue to create **more values** for customers.



发展战略

DEVELOPMENT STRATEGY

标准化精益制造 · 信息化高效管理 · 全球化市场布局

Standardized lean manufacturing, Informationalized efficient management, Globalized market structure



企业宗旨

ENTERPRISE TENET

为客户创造价值 · 为员工提供机会

Create value for customers, Provide opportunities for employees



价值理念

ZOZEN VALUES

共享科技 · 体验完美 · 贵于品质 · 恒于服务

Share Technology, Experience Perfection, Quality of High Value, Service of Ever Lasting

ООО «ТИ-СИСТЕМС» ИНЖИНИРИНГ И ПОСТАВКА ТЕХНОЛОГИЧЕСКОГО ОБОРУДОВАНИЯ

Интернет: www.tisys.ru www.tisys.kz www.tisys.by www.tesec.ru www.ти-системс.рф

Телефоны: +7 (495) 7774788, 7489626, (925) 5007155, 54, 65

Эл. почта: info@tisys.ru info@tisys.kz info@tisys.by



公司简介 COMPANY PROFILE

无锡中正锅炉有限公司成立于1988年,是中华人民共和国国家市场监督管理总局核准的锅炉和压力容器定点制造企业。公司持有A级锅炉制造许可证, D1、D2级压力容器制造许可证, 美国ASME标准“S”(动力锅炉)、“U”(压力容器)许可钢印, 并全面通过ISO9001:2000国际质量体系认证。公司座落于风光优美的太湖之滨, 占地15万平方米, 是一个具有年产12000蒸吨锅炉生产能力的现代化企业, 为AAA级资信等级企业, 历年来被评为无锡市及江苏省的重合同守信用企业、出口名牌企业、高新技术企业、优秀民营企业。

中正锅炉始终以客户需求出发, 依托专业方案设计能力和几十年行业深耕, 为客户提供工业锅炉、有机热载体锅炉、大型热水锅炉、电站锅炉、余热锅炉、生物质锅炉、压力容器等系列产品的整体解决方案, 帮助客户提升锅炉运营效益。

Wuxi ZOZEN Boilers Co., Ltd., established in 1988, is a designated manufacturer of boilers and pressure vessels approved by the government. ZOZEN Boiler is an ACSIQ approved A-grade boiler and D1, D2 grade pressure vessel manufacturer. It holds the ASME "S" and "U" Certificates and has earned ISO9001:2000 Certification. ZOZEN Boiler situated along the coast of beautiful Taihu Lake in Wuxi, covering an area of 15,000 square meters, is a modern enterprise with an annual production capacity of 12000 tons of steam. ZOZEN Boiler is a top AAA-grade credit enterprise approved by the banks. Also, it is certificated as the Enterprise For Honoring Contract and Keeping Promise, as well as the title of High-tech Enterprise, Excellent Private Enterprise and Top Export Brand by the city of Wuxi and Jiangsu Province.

ZOZEN Boiler always focuses on the customer's needs, relies on the professional design ability of boiler and decades of industrial experiences, to provide customers with overall solutions for industrial boilers, thermal oil heaters, large-scale hot water boilers, power plant boilers, HRSG, biomass-fired boilers, pressure vessels and other products, in order to improve the operation efficiency of boilers for the customers.

公司优势 COMPANY ADVANTAGES

中正锅炉始终秉承“我们用心, 只做锅炉”的发展理念, 全面推进精益工厂的建设, 实行信息化管理和6S现场管理。目前, 中正锅炉在行业内率先建立了锅炉选型、设计、工艺、检验四大数据库, 全面实行计算机信息化管理, 搭建工业互联网平台。在MES生产执行系统的统一调配下, 各个部门高效完成协同配合, 促进各锅炉项目的有序推进。

ZOZEN Boiler always adheres to the boiler production and implements the concept of lean manufacturing and 6S site management. At present, ZOZEN Boiler has taken the lead in establishing four databases of boiler type selection, design, technology and inspection in the industry, fully implementing computer information management and building an industrial Internet platform. Each department can coordinate efficiently and promote the orderly advancement of various boiler projects with the Manufacturing Execution System.

为提高生产效率、保证产品质量, 中正锅炉不但引进了国际先进的工艺设备, 更自主研发了多项生产加工设备, 拥有领跑国内的自动化生产线及生产专利技术。同时, 独创下料数字化、焊接自动化、装配模具化的工艺标准, 全过程严控锅炉品质, 使每一台中正锅炉都成为凝结匠心之作。

In order to improve the production efficiency and assure the product quality, ZOZEN Boiler imports international advanced process equipment, independently develops a number of production and processing equipment, with leading domestic automated production lines and patented production technology. At the same time, the original digital blanking, automatic welding and assemble equipment are set to assure product quality in the manufacturing process.

无锡中正锅炉有限公司在全国各省份及德国、印尼、菲律宾、泰国、越南、乌兹别克斯坦等地建立了服务中心, 为客户提供项目技术咨询、量身定制锅炉系统方案、完成安装指导等全方位的优质服务, 切实为每一位用户排忧解难, 实现企业降本增效的预期目标。

ZOZEN Boiler has set up service centers in domestic and abroad, such as in Germany, Indonesia, Philippines, Thailand, Vietnam, Uzbekistan and so on to provide customers with all-round services such as project technical consultation, customized boiler solutions, installation guidance, etc., to effectively solve problems for each user and achieve the expected goal of reducing costs and increasing efficiency.



精益工厂
LEAN MANUFACTURING
FACTORY



品质保障
QUALITY ASSURANCE



专业服务
PROFESSIONAL SERVICE



WNS系列冷凝式三回程燃气(油)锅炉

WNS SERIES CONDENSING THREE-PASS GAS/OIL-FIRED BOILER



产品简介

PRODUCT INTRODUCTION

WNS系列燃气(油)锅炉是无锡中正锅炉有限公司根据国际先进技术和经验设计而成,采用卧式内燃、锅壳式、三回程湿背结构,配有国内外先进的燃烧器。锅炉运行自动化,燃料经燃烧器雾化后,点火燃烧形成的火炬充满在全波纹炉胆内,并通过波纹炉胆壁传递辐射热,此为第一回程。燃烧产生的高温烟气在回燃室内汇聚,转向进入第二回程,即螺纹烟管束区,经强化对流换热后,烟气温度逐渐降低后至前烟箱,并在此转向进入第三回程管束区,随后经后烟箱进入冷凝式节能器及烟囱排向大气。

该系列产品燃料适应广,可适合天然气、沼气、煤气、柴油、重油、轻油、石化装置尾气、工业废气等多种燃料,并可实现多种燃料混合燃烧,具有安全可靠、高效率、节能环保、维护方便、经久耐用、全自动智能控制等特点。经特检院热能测试中心能效测试,各项性能指标均高于设计要求。同时,国家权威部门环保测试结果显示,NO_x已全面实现超低氮排放,达到国内外先进水平。

ZOZEN WNS series gas/oil-fired boiler is designed based on the international advanced technologies and practical experiences. WNS series horizontal internal combustion boiler is a wetback shell type with three passes. It can be equipped with the advanced burner. The boiler is automatically operated. After the fuel is atomized by the burner, the full corrugated furnace is filled with a flame formed by ignition and combustion, and the radiant heat is transmitted through the furnace wall. This is the first pass. The high-temperature flue gas generated by combustion gathers in the reversal chamber and turns into the second pass, which is the threaded smoke tube bundle area. After the heat exchange by convection, the flue gas temperature gradually decreases, it turns into the third pass, and then passes through the economizer and condenser to chimney, and finally is discharged into the atmosphere.

There are many kinds of fuels that can be suitable for the WNS series boiler, for example, the natural gas, biogas, coal gas, diesel oil, heavy oil, light oil, flue gases of petrochemical plants and industrial waste gas, etc. The mixed combustion of various fuels is also available. This series of products has the characteristics of safety, reliability, high efficiency, energy saving and environmental protection. It also features convenient maintenance, long service life and intelligent automatic control and so on. Tested by the authorized agency, all performance indexes are higher than the design requirements. The environmental protection test results of national authorities show that NO_x has achieved ultra-low nitrogen emission in an all-round way, which reaches the advanced level at home and abroad.

结构示意图

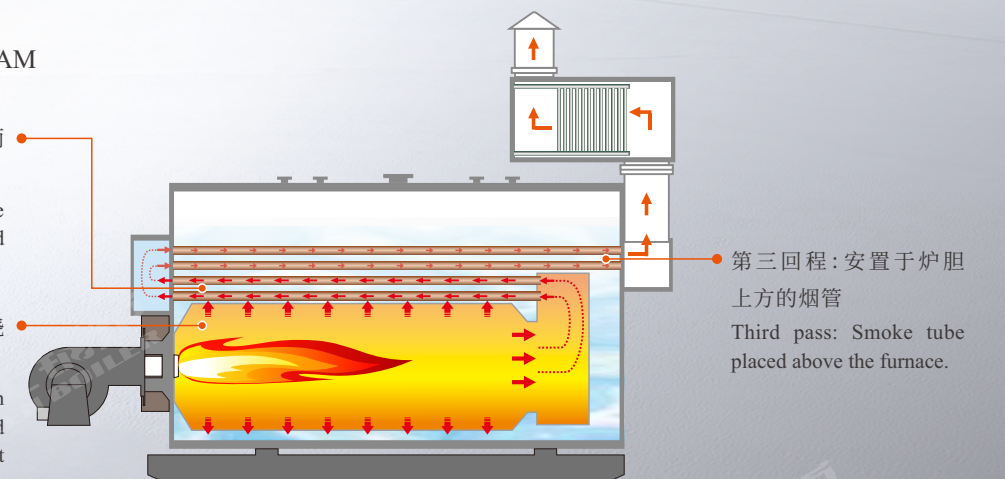
STRUCTURE DIAGRAM

第二回程:分置于炉胆两侧的螺纹烟管

Second pass: thread smoke tubes respectively arranged on both sides of furnace.

第一回程:波纹炉胆燃烧室通过炉胆壁传递辐射热

First pass: The combustion chamber of corrugated furnace transfers radiant heat through the furnace wall.



第三回程:安置于炉胆上方的烟管

Third pass: Smoke tube placed above the furnace.

产品优势

PRODUCT ADVANTAGES

大容量 Sufficient capacity

- 充足的蒸汽储藏空间和受热面, 令锅炉能高效率地产生较高热功率和高品质的蒸汽。
- Sufficient steam storage space and heating surface enable the boiler to generate higher thermal power and high-quality steam efficiently.

双层保温设计 Double layer insulation design

- 不仅将炉体温度控制在45°C以下, 而且有效减少散热损失, 提高热效率;
- 内部采用高品质岩棉/硅酸铝棉, 以及耐火泥进行保温;
- 外用1毫米不锈钢外护板, 有效防止潮气侵入保温棉和锅炉本体, 延长锅炉使用年限。
- Not only control furnace temperature under 45°C, also effectively reduce heat loss and increase thermal efficiency.
- Insulated with high quality rock wool/aluminum silicate wool and refractory mud inside.
- Covered with 1mm stainless steel guard plate outside, effectively prevent moisture from invading into insulation layer and boiler proper, in hence prolong the boiler service life.

烟箱 Smoke chamber

- 烟箱门采用铰链结构, 窗户式开启, 便于检修和清理。
- Smoke chamber door adopts hinge structure and window type, which is convenient for maintenance and cleaning.

全自动控制 Automatic control

- 全自动运行, 燃烧、水位、温度及压力均可自动调节控制, 并实现云平台远程监控及同步报警。
- The boiler can be operated automatically. Boiler parameters such as combustion situation, water level, temperature and working pressure can be automatically adjusted and controlled. It can also realize remote monitoring and synchronous alarm of cloud platform.

锅炉油漆 Boiler paint

- 漆膜的厚度至少可达150um, 在运输过程中可有效防止海水腐蚀表面;
- The paint film can be at least as thick as 150um, it effectively prevent seawater corrosion during transportation.
- 喷砂处理之后, 采用高品质油漆和汽车喷漆技术, 完成4层油漆和1层清漆的喷涂, 具备出色防腐性能的同时, 锅炉外观更有质感。
- After sandblasting, 4 layers paint and 1 layer varnish are sprayed with high quality paint and automobile painting technology, to reach excellent anti-corrosion performance and better boiler appearance.

增设冷凝式节能器 Add condensing economizer

- 加设冷凝式节能器, 利用锅炉尾部排出烟气中的余热, 提高锅炉进水温度, 降低排烟温度, 使锅炉热效率提高到98%以上, 从而节省运行成本;
- 冷凝式节能器采用翅片管设计, 减小体积的同时, 增加受热面、提高传热效率;
- 翅片管采用ND钢或不锈钢材质, 有效解决了钢材的低温腐蚀问题。
- The condensing economizer is added to increase the boiler inlet temperature and reduce the exhaust gas temperature by using the waste heat in the flue gas. It increases the thermal efficiency up to 98%, and saves the operation cost of the boiler.
- The condensing economizer adopts finned tube to decrease the volume, increases the heating surface and improves the heat transfer efficiency.
- The finned tube is made of ND steel or stainless steel, which effectively solves the problem of low temperature corrosion of steel.

本体布线整体设计 Overall design of body wiring

- 锅炉本体布线进行了科学合理的整体设计, 大幅缩短锅炉安装时间, 降低了安装成本。
- Scientific boiler proper wiring design greatly shortens the installation time and reduces installation cost.

螺纹烟管 Threaded smoke tube

- 强化传热效果, 提高锅炉热效率;
- 螺纹烟管为我公司多年研究的高效传热元件, 采用流水线全自动旋压作业, 在螺纹槽深与节距的选取上, 达到满足流阻最低时, 传热系数比普通烟管高1.4倍。
- Strengthen heat transfer to improve boiler heat efficiency.
- Thread smoke tube is an effective heat transfer element researched by our company for many years. It adopts full line dynamic spinning operation. In the selection of thread groove depth and pitch, when the full flow resistance is the lowest, the heat transfer coefficient is 1.4 times that of ordinary smoke tube.

波纹炉胆 Corrugated furnace

- 增强了烟气扰动, 又有效提高了单位面积和单位体积的传热效果;
- 增加了炉胆强度和弹性, 在锅炉热膨胀过程中有效保护受压元件, 避免由于应力增加而产生破坏。
- Enhance the disturbance of flue gas and effectively improve the heat transfer effect per unit area and volume.
- Increase the strength and elasticity of the furnace. Protect the pressure parts in the process of boiler thermal expansion, and avoid damage caused by increased stress.



WNS系列冷凝式三回程 燃气(油)蒸汽锅炉流程图

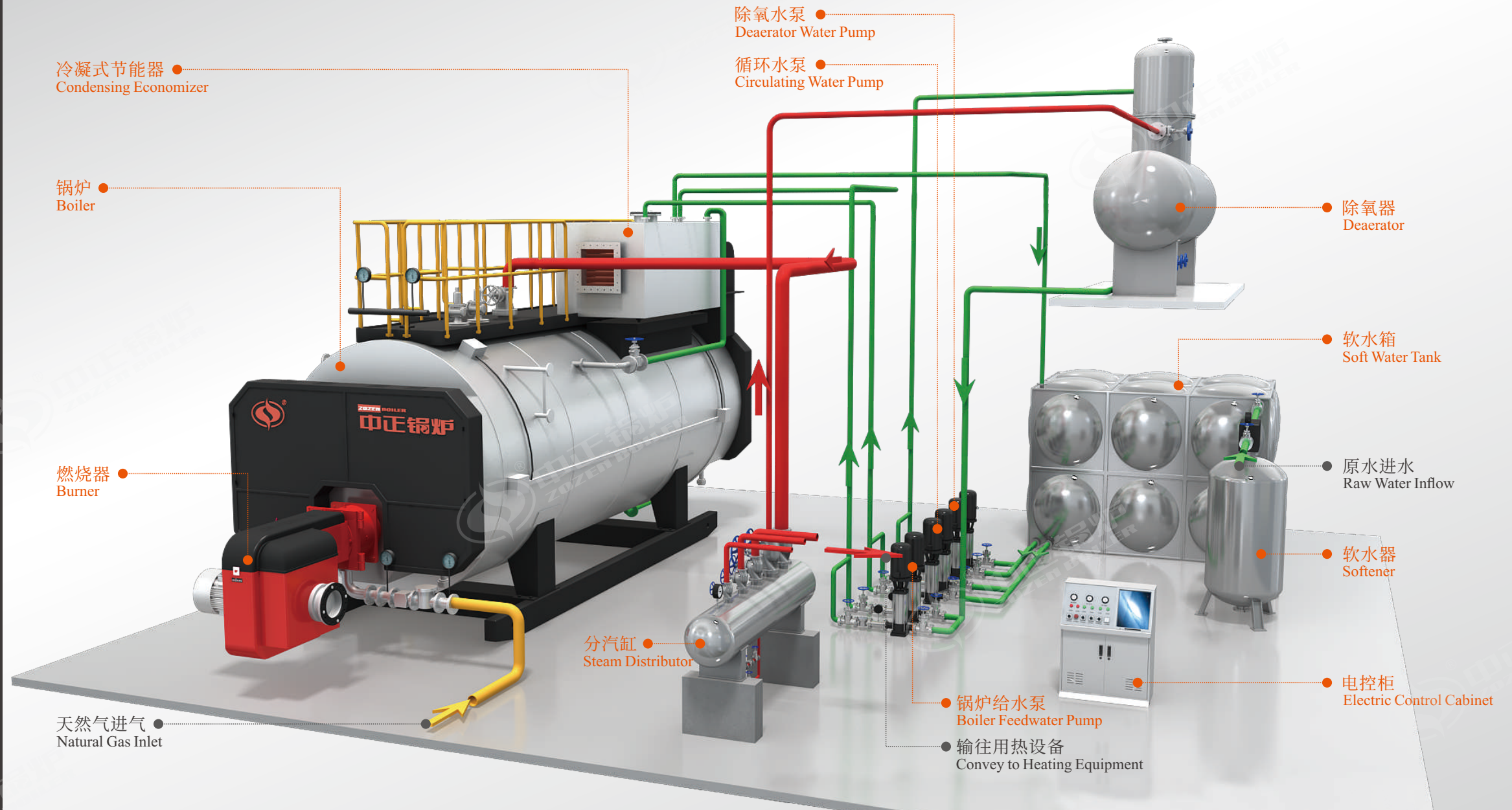
WNS SERIES CONDENSING
THREE-PASS GAS/OIL-FIRED
STEAM BOILER FLOW DIAGRAM

图样列表 Pattern List

- 水管道
Water Pipe
- 蒸汽管道
Steam Pipe
- 天然气管道
Natural Gas Pipe

*本系统为标准配置, 配套辅机可根据客户实际需求进行调整。

*The system is designed as standard configuration, and auxiliary equipment can be selected according to the actual needs of customers.



锅炉型号 Model	WNS1-0.7-Q(Y) WNS1-1.0-Q(Y)	WNS1.5-1.0-Q(Y) WNS1.2-1.25-Q(Y)	WNS2-1.0-Q(Y) WNS2-1.25-Q(Y)	WNS3-1.0-Q(Y) WNS3-1.25-Q(Y)	WNS4-1.25-Q(Y) WNS4-1.6-Q(Y)	WNS5-1.25-Q(Y) WNS5-1.6-Q(Y)	WNS6-1.25-Q(Y) WNS6-1.6-Q(Y)	WNS8-1.25-Q(Y) WNS8-1.6-Q(Y)	WNS10-1.25-Q(Y) WNS10-1.6-Q(Y)	WNS15-1.25-Q(Y) WNS15-1.6-Q(Y)	WNS20-1.25-Q(Y) WNS20-1.6-Q(Y)	
额定蒸发量 (t/h) Rated steam capacity (t/h)	1.0	1.5	2.0	3.0	4.0	5.0	6.0	8.0	10.0	15.0	20.0	
额定工作压力 (MPa) Rated working pressure (MPa)	0.7/1.0	1.0/1.25	1.0/1.25	1.0/1.25	1.25/1.6	1.25/1.6	1.25/1.6	1.25/1.6	1.25/1.6	1.25/1.6	1.25/1.6	
额定蒸汽温度 (°C) Rated steam temperature (°C)	170/184	184/194	184/194	184/194	194/204	194/204	194/204	194/204	194/204	194/204	194/204	
给水温度 (°C) Feed water temperature (°C)	20	20	20	20	20	20	20	20	104	104	104	
热效率 (%) Thermal efficiency (%)	>98	>98	>98	>98	>98	>98	>98	>98	>98	>98	>98	
适用燃料 Applicable Fuel	天然气、沼气、煤气、柴油、重油、轻油、石化装置尾气、工业废气等多种燃料 Natural gas, biogas, coal gas, diesel oil, heavy oil, light oil, flue gases of petrochemical plants and industrial waste gas, etc.						天然气、沼气、煤气、柴油、重油、轻油、石化装置尾气、工业废气等多种燃料 Natural gas, biogas, coal gas, diesel oil, heavy oil, light oil, flue gases of petrochemical plants and industrial waste gas, etc.					
燃烧设备 Combustion equipment	燃烧器 / Burner						燃烧器 / Burner					
锅炉燃料消耗量 Fuel consumption	天然气 (Nm ³ /h) Natural gas (Nm ³ /h)	78	117	156	234	312	390	468	624	700	1050	1400
	轻油 (kg/h) Light oil (kg/h)	66	99	132	196	266	332	399	532	580	870	1160
最大运输重量 (t) Maximum transport weight (t)	4.5	7	9	11.5	15	18	19.5	25	27.5	40	52	
最大运输尺寸 L×W×H (m) Maximum transport dimension (m)	3.00×2.00×2.00	3.60×2.00×2.37	4.40×2.20×2.52	4.40×2.40×2.78	5.00×2.60×2.92	5.30×2.65×3.00	5.93×2.80×3.16	7.10×2.80×3.23	7.65×2.80×3.23	7.95×3.45×3.70	8.30×3.70×4.02	

ООО «ТИ-СИСТЕМС» ИНЖИНИРИНГ И ПОСТАВКА ТЕХНОЛОГИЧЕСКОГО ОБОРУДОВАНИЯ

Интернет: www.tisys.ru www.tisys.kz www.tisys.by www.tesec.ru www.ти-системс.рф

Телефоны: +7 (495) 7774788, 7489626, (925) 5007155, 54, 65

Эл. почта: info@tisys.ru info@tisys.kz info@tisys.by

WNS系列冷凝式三回程 燃气(油)热水锅炉流程图

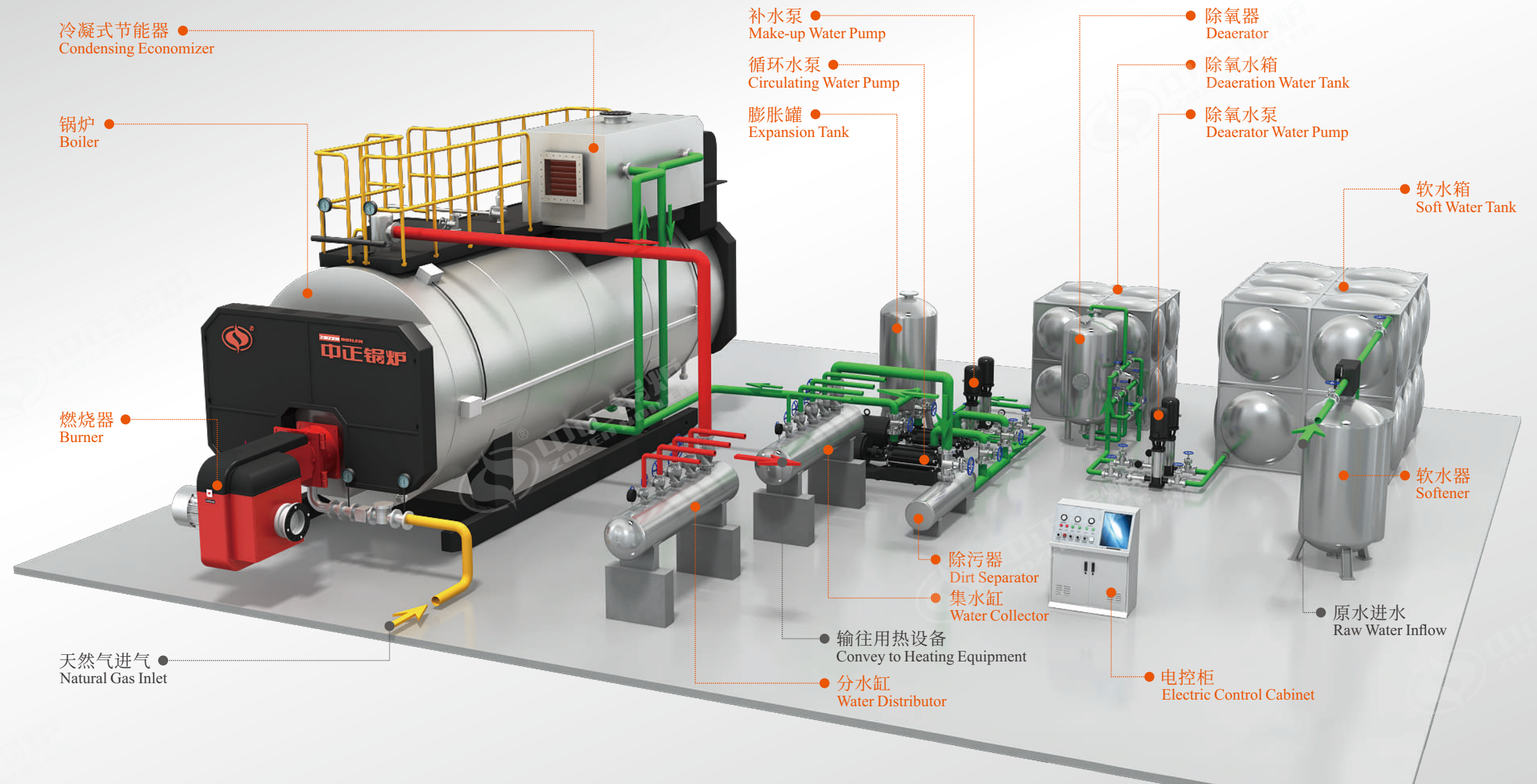
WNS SERIES CONDENSING
THREE-PASS GAS/OIL-FIRED HOT
WATER BOILER FLOW DIAGRAM

图样列表 Pattern List

- 水管道
Water Pipe
- 热水管道
Hot Water Pipe
- 天然气管道
Natural Gas Pipe

*本系统为标准配置, 配套辅机可根据客户
实际需求进行调整。

*The system is designed as standard configuration,
and auxiliary equipment can be selected according
to the actual needs of customers.



锅炉型号 Model	WNS0.7-0.7/95/70-Q(Y)	WNS1.4-0.7/95/70-Q(Y)	WNS2.1-0.7/95/70-Q(Y)	WNS2.8-0.7/95/70-Q(Y)	WNS3.5-0.7/95/70-Q(Y)	WNS4.2-1.0/115/70-Q(Y)	WNS5.6-1.0/115/70-Q(Y)	WNS7-1.0/115/70-Q(Y)	WNS10.5-1.0/115/70-Q(Y)	WNS14-1.0/115/70-Q(Y)	
额定热功率(MW) Rated thermal power (MW)	0.7	1.4	2.1	2.8	3.5	4.2	5.6	7.0	10.5	14.0	
额定工作压力(MPa) Rated working pressure (MPa)	0.7	0.7	0.7	0.7	0.7	1.0	1.0	1.0	1.0	1.0	
额定出水温度(°C) Rated output water temperature (°C)	95	95	95	95	95	115	115	115	115	115	
额定进水温度(°C) Rated inlet water temperature (°C)	70	70	70	70	70	70	70	70	70	70	
热效率(%) Thermal efficiency (%)	>98	>98	>98	>98	>98	>98	>98	>98	>98	>98	
适用燃料 Applicable Fuel	天然气、沼气、煤气、柴油、重油、轻油、石化装置尾气、工业废气等多种燃料 Natural gas, biogas, coal gas, diesel oil, heavy oil, light oil, flue gases of petrochemical plants and industrial waste gas, etc.					天然气、沼气、煤气、柴油、重油、轻油、石化装置尾气、工业废气等多种燃料 Natural gas, biogas, coal gas, diesel oil, heavy oil, light oil, flue gases of petrochemical plants and industrial waste gas, etc.					
燃烧设备 Combustion equipment	燃烧器 / Burner					燃烧器 / Burner					
锅炉燃料消耗量 Fuel consumption	天然气(Nm ³ /h) Natural gas (Nm ³ /h)	75	150	225	300	375	450	600	750	1125	1500
	轻油(kg/h) Light oil (kg/h)	62	124	186	248	310	372	496	620	930	1240
最大运输重量(t) Maximum transport weight (t)	4.0	8.3	8.9	13.3	14.3	19.5	22.6	25.8	33.0	46.0	
最大运输尺寸L×W×H(m) Maximum transport dimension (m)	3.25×1.80×2.10	4.40×2.10×2.46	4.60×2.31×2.62	4.70×2.48×2.85	5.30×2.65×3.30	6.20×2.80×3.10	7.04×2.87×3.10	7.30×2.88×3.16	8.00×3.37×3.57	7.77×3.61×3.99	

ООО «ТИ-СИСТЕМС» ИНЖИНИРИНГ И ПОСТАВКА ТЕХНОЛОГИЧЕСКОГО ОБОРУДОВАНИЯ

Интернет: www.tisys.ru www.tisys.kz www.tisys.by www.tesec.ru www.ти-системс.рф

Телефоны: +7 (495) 7774788, 7489626, (925) 5007155, 54, 65

Эл. почта: info@tisys.ru info@tisys.kz info@tisys.by

锅炉物联网解决方案 IOT SOLUTION FOR BOILERS

物联网系统采用分层结构设计, 共分为三层: 数据采集层(M BOX)、云平台(M SERVER)、应用层(MYZT应用系统)。
IOT system is divided into three layers: **data acquisition layer(M BOX), cloud platform(M SERVER), and application layer(MYZT application system).**



▶ 设备监控子系统

通过PC、APP、大屏实时监控锅炉整体运行状态, 实现故障报警、视频监控的实时上传。

运行状态: 开关机状态、目标压力、目标水位、目标温度等。

设备分布: 整体设备运行情况、设备地理位置。

炉体参数: 炉膛温度、水位、压力、节能器-进出水温度、冷凝器-进出水温度等。

运行参数: 给水流量、蒸汽流量、氧含量等。

辅机参数: 燃烧输出状态、变频器输出频率等。

环保参数: 大气污染物(SO_x、NO_x、颗粒物等)指标数据。

操作日志: 系统对该设备所有操作记录。

▶ 专家管理子系统

对锅炉运行期间常见问题及处理措施, 建立锅炉专家管理知识库, 通过系统的客服中心提升售后服务质量。

预警设定: 确定参数以及触发预警的阈值, 形成预警条件, 确定预警条件下适用的项目(设备)。

应急预案: 对常见故障给出出现问题的原因以及应急处理预案, 发送故障之后可自动推送相关管理人员。

预警检验: 通过统计每条预警机制的年(季度)触发次数, 以及现场实际反馈情况, 对预警条件以及应急预案做反向检验。

▶ Equipment monitoring subsystem

The overall operation status of the boiler is monitored in real time through PC, app and large screen, so as to realize the real-time upload of fault alarm and video monitoring.

Operation status: on/off status, target pressure, target water level, target temperature etc.

Equipment distribution: overall equipment operation and geographical location.

Boiler specification: furnace temperature, water level, pressure, outlet and inlet water temperature of economizer and condenser etc.

Operation specification: feed water flow, steam flow, oxygen content etc.

Auxiliary specification: combustion output status, frequency converter output frequency etc.

Environmental protection parameters: index data of air pollutants (Sox, NOx, particulate matter etc).

Operation log: records all operations of the equipment.

▶ Expert management subsystem

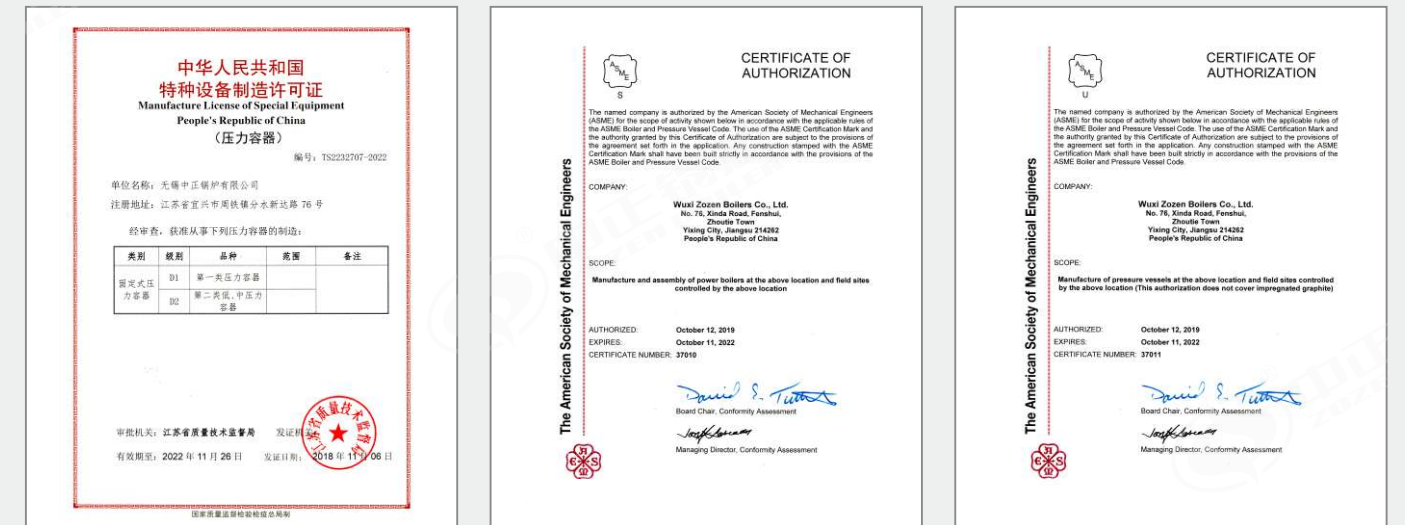
For common problems and treatment measures during boiler operation, establish boiler expert management knowledge base, and improve the after-sales service quality through the system customer service center.

Alert settings: determine parameters and thresholds to trigger alerts to form alert conditions, and determine applicable items (equipment) under alert conditions.

Emergency plan: give the causes of common faults and emergency treatment plan, and automatically push the faults to relevant management personnel.

Early warning inspection: conduct reverse inspection on early warning conditions and emergency plans by counting the annual (quarterly) trigger times of each early warning mechanism and actual feedback on site.

荣誉&资质 HONOUR & QUALIFICATION



ООО «ТИ-СИСТЕМС» ИНЖИНИРИНГ И ПОСТАВКА ТЕХНОЛОГИЧЕСКОГО ОБОРУДОВАНИЯ

Интернет: www.tisys.ru www.tisys.kz www.tisys.by www.tesec.ru www.ти-системс.рф

Телефоны: +7 (495) 7774788, 7489626, (925) 5007155, 54, 65

Эл. почта: info@tisys.ru info@tisys.kz info@tisys.by

荣耀客户

HONOUR CUSTOMERS

累计超过**15580**个客户案例 覆盖各个行业
More Than **15580** Customer Cases, Covering All Industries





每一台锅炉都凝结匠心 EVERY BOILER CONTAINS INGENUITY

下料数字化 Blanking Digitization

数字化确保了零组件的高加工精度,是锅炉焊接和装配的质量保证。目前中正锅炉拥有先进的数控化设备600台套,下料数控率达80%以上,钢板下料、卷圆、管板钻孔等关键制造环节均采用了先进的数控加工工艺,减少组装应力,延长锅炉使用寿命。

Digitization ensures high machining accuracy of parts and components and is the quality assurance of boiler welding and assembly. At present, ZOZEN boiler has 600 sets of advanced numerical control equipment, and the blanking numerical control rate is more than 80%. Advanced numerical control processing technology is adopted in key manufacturing processes such as steel plate blanking, rolling and tube plate drilling, so as to reduce assembly stress and prolong the service life of the boiler.

焊接自动化 Welding Automation

大量进口自动焊接设备的引进,实现了从锅筒、膜式壁、蛇形管到钢架等主要部件焊接的自动化,并通过严格把控焊前处理和坡口尺寸,使焊缝质量有了可靠保障。同时,对所有纵、环焊缝进行100%的射线探伤。

A large number of imported automatic welding equipment are introduced to realize the welding automatization of main components from drum, membrane wall, serpentine pipe to steel frame, and ensure the weld quality by strictly controlling the pre-welding treatment and groove size. At the same time, 100% radiographic inspection shall be conducted for all longitudinal and circumferential welds.

装配模具化 Assembly Modularization

克服或减少人为因素对产品质量的影响,是提高锅炉制造工艺水平的重要手段。针对产品的装配环节,中正锅炉实现了装配的模具化、标准化,减少传统划线装配的加工手段,杜绝划线差错,保证锅炉产品品质如一。

Overcoming or reducing the influence of human factors on product quality is an important means to improve the level of boiler manufacturing process. Aiming at the product assembly link, ZOZEN boiler realizes the modularization and standardization of assembly, reduces the processing means of traditional lineation assembly, eliminates scribing errors, and ensures the consistent quality of boiler products.

信息化管理 Management Informatization

在行业内率先推行信息化管理,实现从研发设计、生产制造、质量检测、售后服务等整个流程的信息化全覆盖。在提升锅炉品质的同时,进一步提高服务品质,为每一位用户建立锅炉项目档案,让服务链贯穿锅炉项目的整个生命周期。

Take the lead in implementing information management in the industry to achieve full information coverage of the whole process from R & D design, production, manufacturing, quality inspection, after-sales service and so on. While improving the boiler quality, ZOZEN further improves the service quality, establishes boiler project files for each user, and lets the service chain run through the whole life cycle of the boiler project.

服务承诺 SERVICE GUARANTEE

四全服务体系,中正义定义行业服务新标准

从锅炉方案到售后支持,全天候、全过程、全方位、全身心的服务体系为客户事业保驾护航。

Four "all" service system, ZOZEN define new standard of industry service.

From boiler plan to service support, all day, all aspects, all directions and all heartily escorts the cause of customer.



四全服务体系
FOUR "ALL" SERVICE SYSTEM



12个月内免费维修
Free maintenance within 12 months



24小时热线待命
24-hour hotline standby



365天全年无休
365 days all year round